

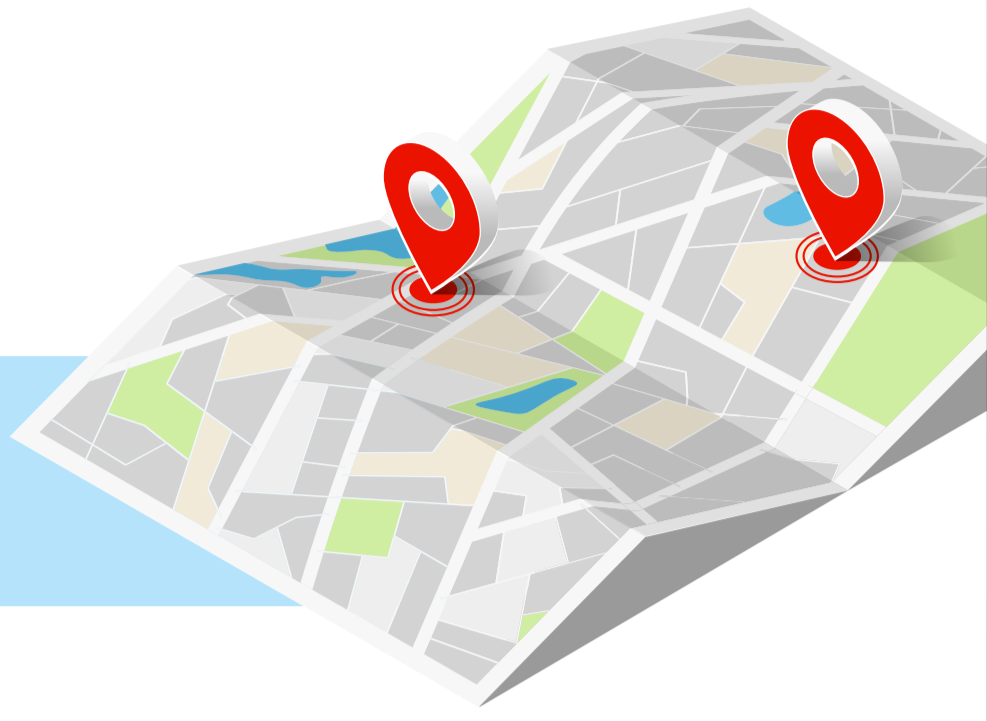
# 5 Reasons You Have Dirty Data in Your GIS

...and how to clean it up

When inaccurate or incomplete data makes it into your GIS tools, it doesn't just create headaches for you – it causes friction and slows things down across your organization. Why does it keep happening? Here are 5 problems with your current process that are creating dirty data:

## 1. The paper problem

Scrawling addresses or marking points on foldable maps is imprecise, and writing down GPS coordinates opens the door to mistakes — at the points of both collection and transcription. That goes for data unrelated to location, too.



Maybe you've already conquered the paper problem and gone digital — with spreadsheets! That creates a different set of problems:



## 2. The data consistency problem

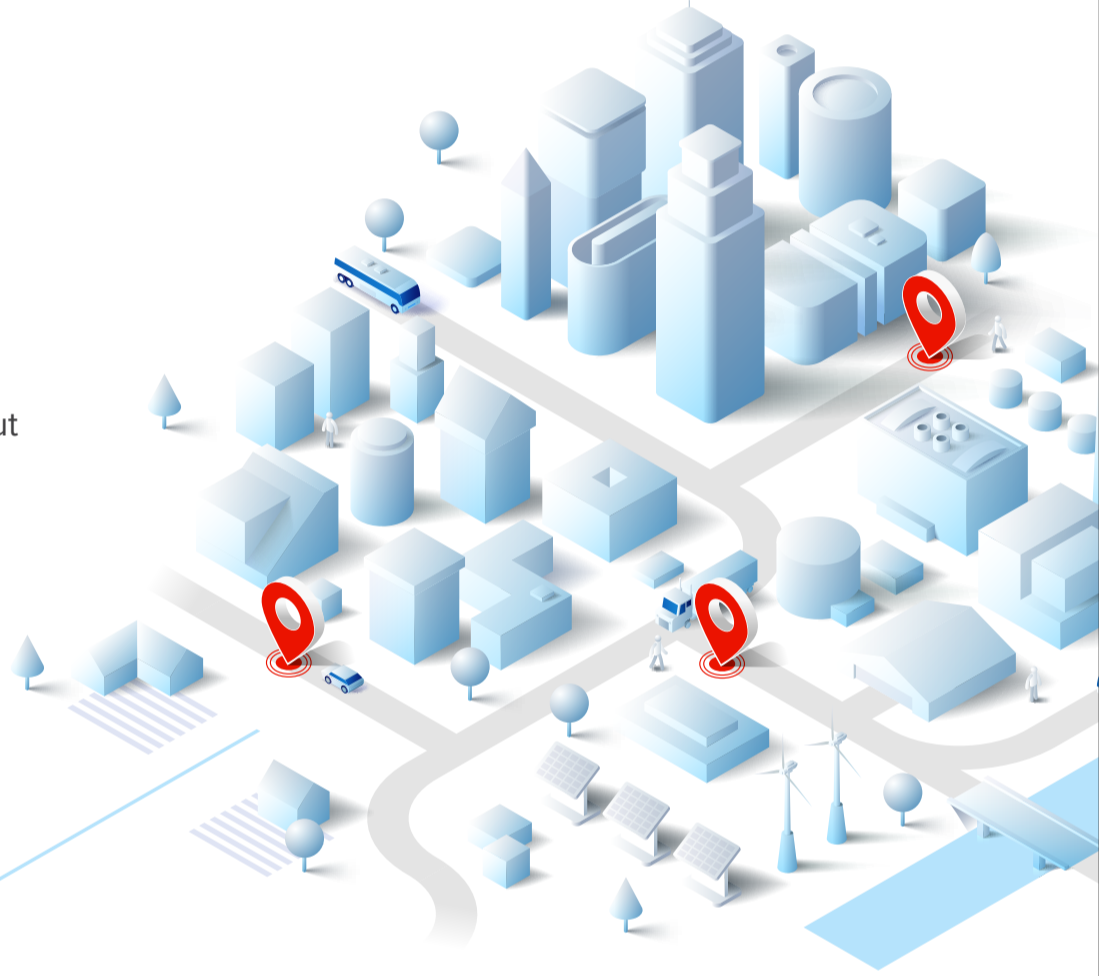
Consistent results require consistent inputs, and people creatively mangle spreadsheets in ways that cause inconsistency. When they add columns or squeeze more than one piece of data into a cell, that results in unreliable data and broken imports.

## 3. The version control problem

When you make modifications to your spreadsheet, you need to ensure that everyone gets the latest version. But predictably, someone will accidentally use the old one (probably more than once) before switching over.

## 4. The lousy location-data problem

Geocoded addresses provide limited resolution. But when someone manually enters precise latitudes and longitudes into a spreadsheet, numbers inevitably get mistyped or transposed.



## 5. The integration problem

Trying to put information from spreadsheets into your GIS (or other platforms, such as IBM Maximo™ or Salesforce™) often creates a problem with translation and communication. For everything to go right, you have to make sure all of the fields line up exactly with the data you want to have — and that process frequently isn't perfect.

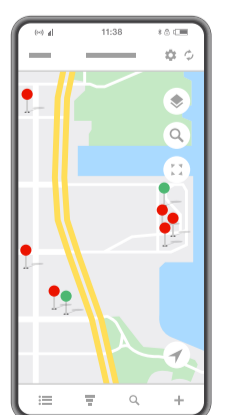
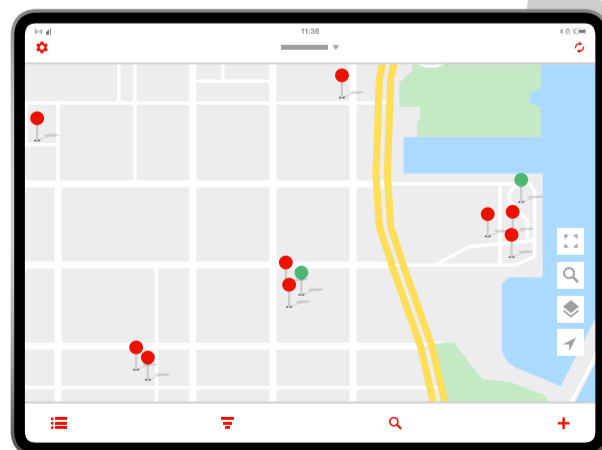
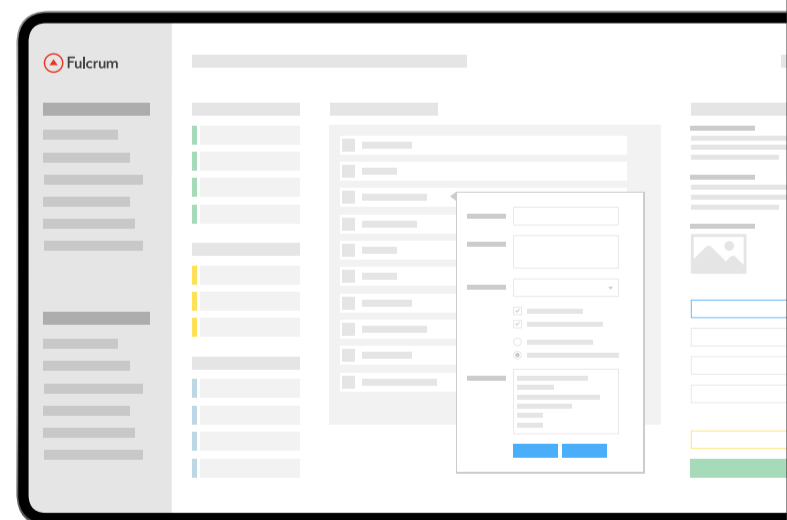
THAT'S A LOT OF PROBLEMS.

## What's the solution?

When you deploy location-aware inspection processes to your mobile teams, it enables them to collect data in the field — using the smartphone or tablet they're already carrying — so you can ditch paper and spreadsheets and the errors they create.

With Fulcrum's field inspection management platform, you can rapidly assemble custom processes that empower your field teams to quickly and easily collect accurate, rich data and intelligently automate administrative tasks that distract from the work at hand. Every record collected with Fulcrum is automatically geotagged using the device's native GPS, and is instantly available to anyone with access to your account.

What's more, Fulcrum integrates seamlessly with GIS platforms like Esri ArcGIS™ to deliver a live feed of data being collected in the field.



WANT TO GIVE IT A SPIN?

**Start your free 30-day trial.**